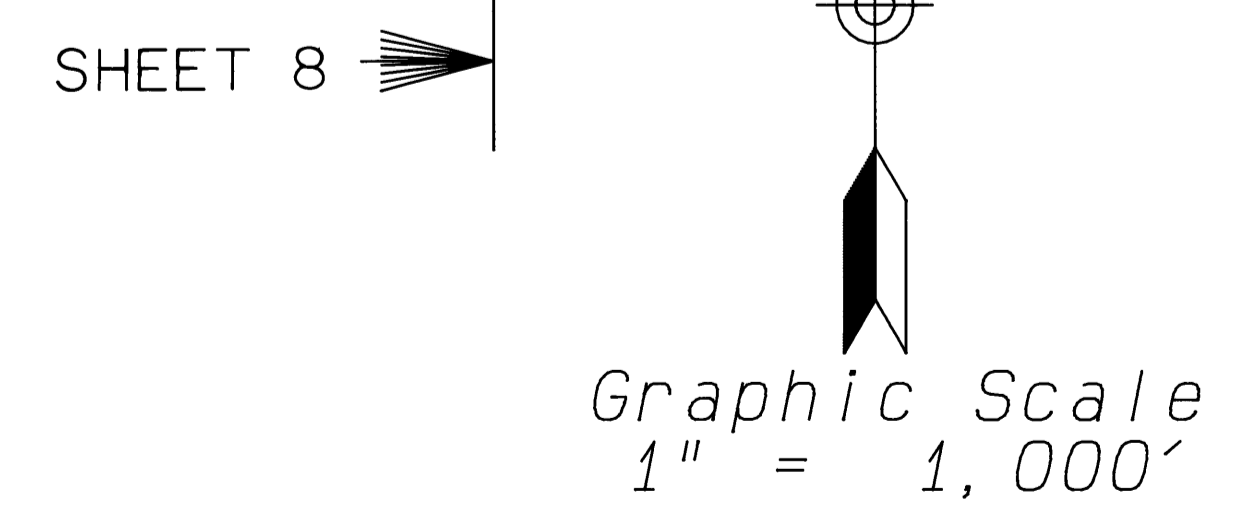
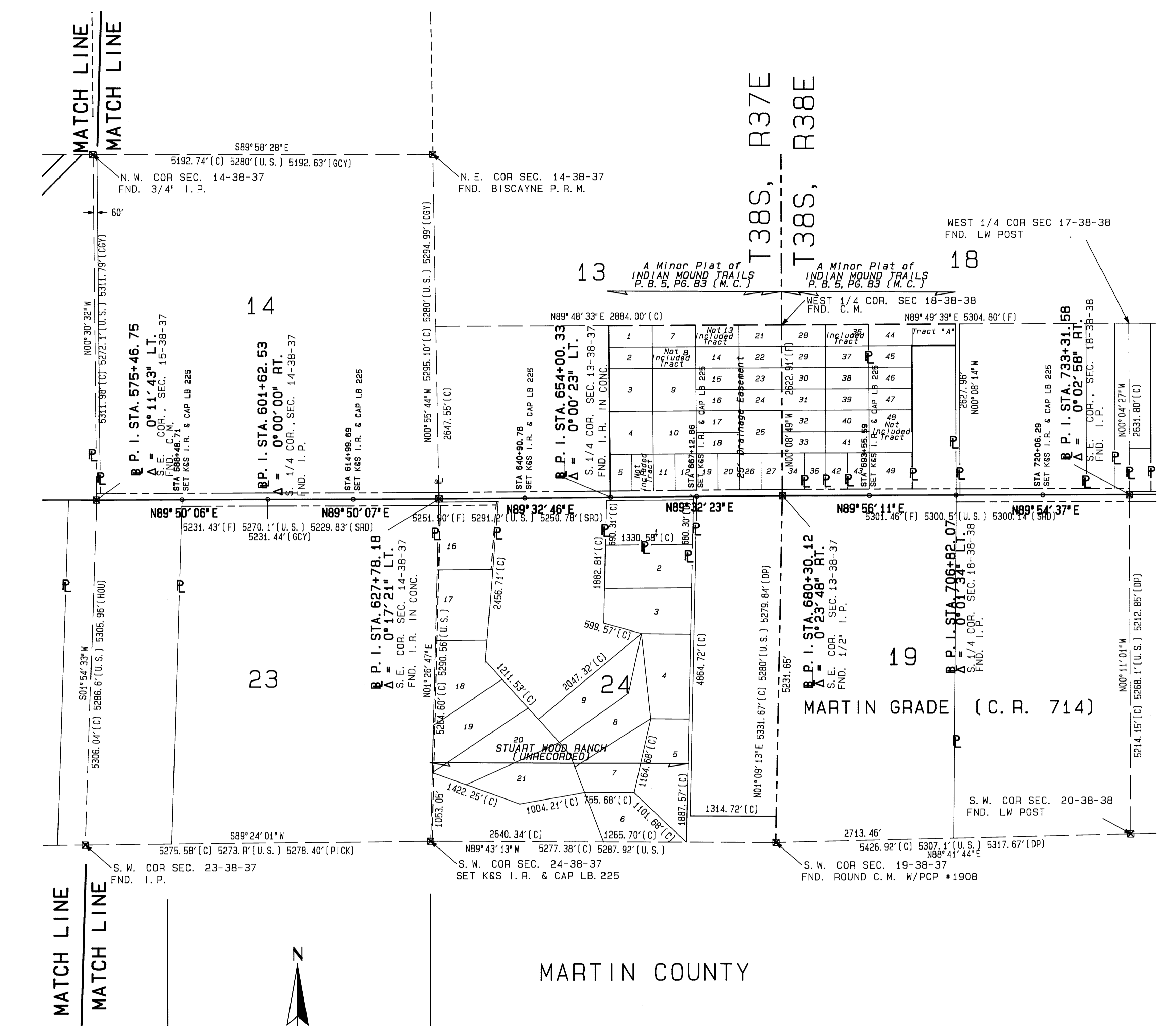


*Filed for record this 17th day of Nov, 1945 in Plat Book 13, Page 98.*  
*File # 1145622*  
*Masha Stiller*  
*Clerk Circuit Court*  
*By Charlotte Beckley, etc.*



MARTIN COUNTY

SPECIFIC PURPOSE SURVEY  
KEY MAP  
MARTIN GRADE (C.R. 714)

MARTIN COUNTY			
ENGINEERING / RIGHT OF WAY DIVISION			
MAINTENANCE MAP			
C.R. 714		MARTIN COUNTY, FLORIDA	
BY	DATE	APPROVED BY:	DATE
DRAWN	E. A. L.	6/93	
TRACED	CADD	6/93	
CHECKED	L. F. D.	6/93	
MAPS PREPARED BY:		FIELD BOOK NOS.	
KEITH & SCHNARS, INC.		90-14, 90-08, 90-18, 90-19, 90-20	
		SCALE 1" = 100'	
SECTION	SEC. 17-24, T. 38 S., R. 37 E.	SHEET 3 OF 11	
	SEC. 19, T. 38 S., R. 38 E.		
REVISION	BY	DATE	